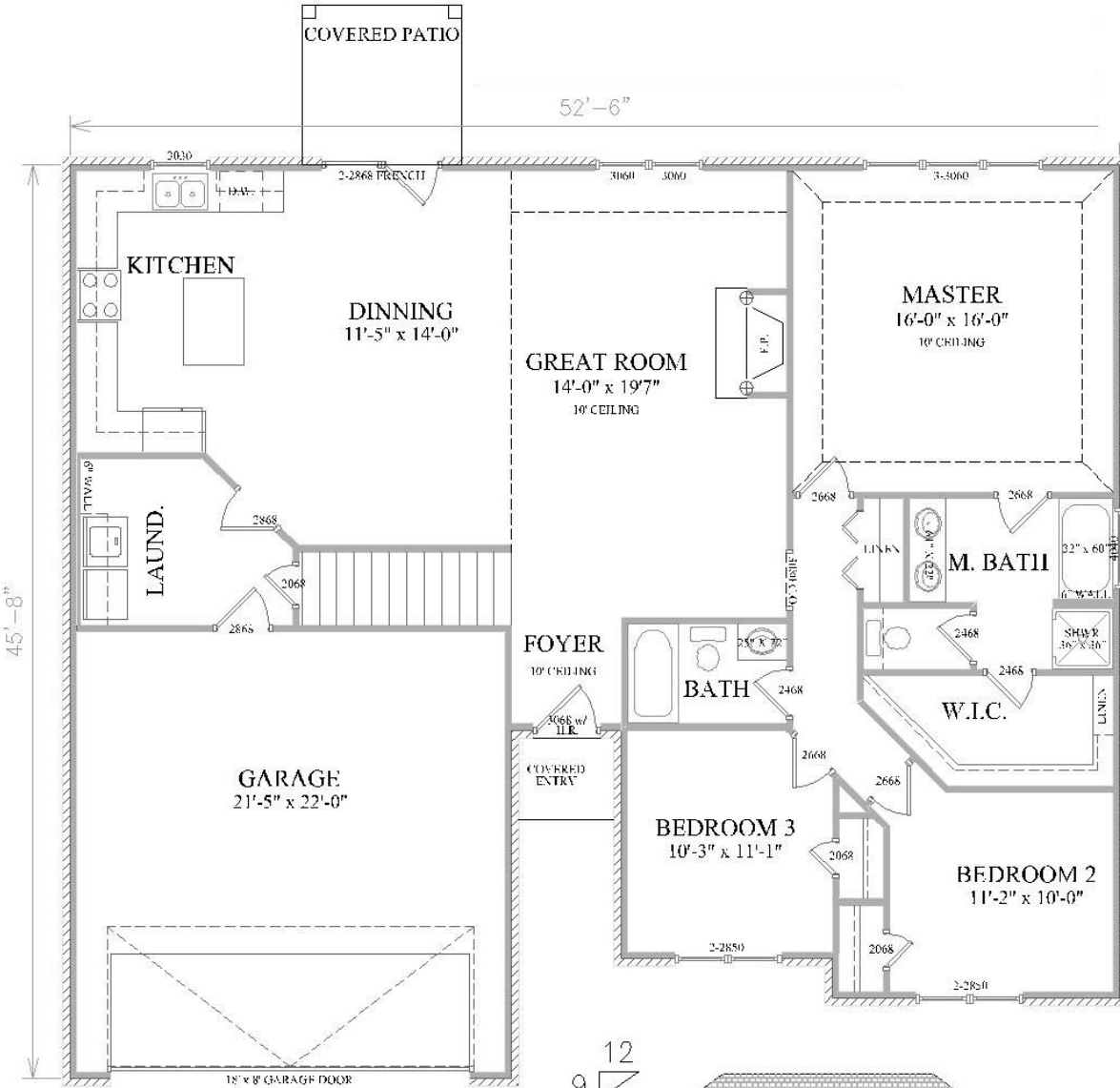


# THE ISABELLA



## Standard features

- Choice of frontage options
- Covered front porch
- Brick front
- Maintenance-free siding on sides/back
- Wood burning fireplace
- Custom-built mantel
- Ceramic tile entry (3x3')
- Architectural roof shingles
- Ceiling fans w/light kits in bedrooms and great room
- Crown Molding in foyer, great room and master suite
- Floored attic storage with pulldown stairs
- Ceramic tile kitchen floor
- Ceramic tile dining area
- 9' ceilings throughout
- Granite look formica countertops
- Cultured marble bathroom tops
- Smooth-top electric range
- Built-in microwave above range
- Spacious pantry
- High efficiency 13-SEER heat pump system

Value Build gives you the most home for the lowest price. We have 15 great floor plans that are exceptionally livable yet are economical to build.



FLOOR PLAN SPECIFICATIONS	
1ST FLOOR HEAT & COOL	1752 SQ.FT.
2ND FLOOR HEAT & COOL	310 SQ.FT.
GARAGE	492 SQ.FT.
FRONT PORCH	19 SQ.FT.
TOTAL UNDER ROOF	2062 SQ.FT.
APPRAISAL INFORMATION	
1ST FLOOR	2753 SQ.FT.

